

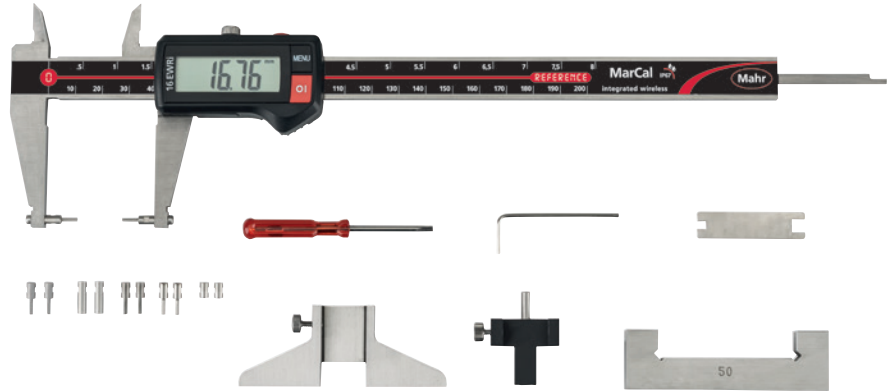
MarCal 16 EWRI-V

Digital Universal Caliper



FUNCTIONS

- AUTO-ON / OFF
- ON/OFF
- DATA (data transmission via connection cable)
- HOLD (storage of measured values)
- PRESET (for entering a numerical value)
- RESET (set display to zero)
- mm/inch
- LOCK function (key lock)



FEATURES

- High contrast analog display
- Locking screw above
- Lapped guideway
- Measuring blade for inside measurements
- Slide and beam made of hardened stainless steel
- Step measuring function
- Immediate measurements due to the Reference System
- Raised guideway for the protection of the scale
- Excellent resistance against dust, coolants and lubricants
- Dirt wipers are integrated in the slide
- SoftwareMarCom Professional free download: www.mahr.com/marcom (only for Mahr data cables and wireless systems with USB and RS232 interface)
- **Digit height:** 11 mm
- **Data interface:** Integrated wireless
- **Energy supply:** Battery life approx. 3 years (approx. 0.5 in wireless mode)
- **IP protection category:** IP 67
- **Package contains:** battery, instruction manual, case, Setting gage for inside measurement 16 Eel, measuring force device 16 Ec, depth measuring bridge 16 Em, anvils for outside measurement 16 Eea 1–3, anvils for inside measurement 16Eei 1–3

Application:

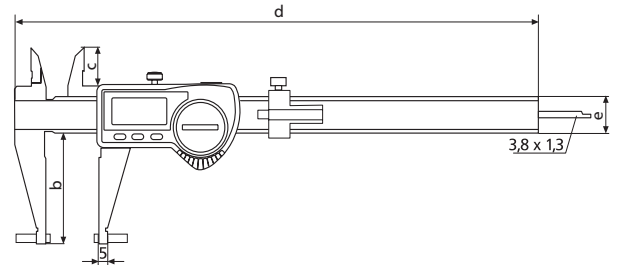
- Can be used as standard calipers (four measuring directions) with standard accessories for measuring recesses, grooves, etc.
- Can be used with special accessories for measuring threads, bores and gears



TECHNICAL DATA

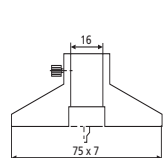
Order no.	Type	Measuring range	Measuring range inch	Numerical increment	Error limit	Error limit inches (text)	Standard	Depth rod	Incl. accessories
4118907	16 EWRI-V	0–200	0–8"	0.01 / .0005"	0.03	.001"	DIN 862	rectangular	•

Order no.	b	c	d	e
4118907	48	16.5	285	16

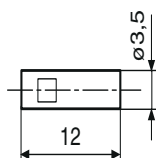


ACCESSORIES

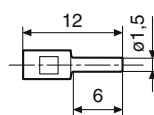
Order no.	Quantity unit	Product name	Type
4102020		Depth bridge (75 x 7 mm)	16 Em
4118810	Piece	Anvil for outside measurement (3.5 x 12 mm)	16 Eea 1
4118811	Piece	Anvil for outside measurement (1.5 x 6 mm)	16 Eea 2
4118812	Piece	Anvil for outside measurement (3.5 x 6 mm)	16 Eea 3
4118813	Piece	Anvil for inside measurement (3.5 x 6 mm)	16 Eei 1
4118814	Piece	Anvil for inside measurement (1.5 x 6 mm)	16 Eei 2
4118815	Piece	Anvil for inside measurement (3.5 x 6 mm)	16 Eei 3
4118816	Piece	Anvil for inside measurement (4 x 2.5 mm)	16 Eei 4
4118817		Setting gage for inside measurement (50 mm)	16 Eel
4118818		Measuring force device	16 Ec
4879602	Piece	Screws M2x8	
4118819		Mounting attachment for thread anvils 844 TG/844Tr and ball anvils 844 Tk	16 Eab
4102220		Receiver for instruments with integrated wireless	i-Stick
4102520		Battery 3 V, CR 2032	



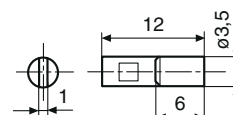
16 Em



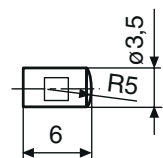
16 Eea 1



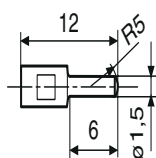
16 Eea 2



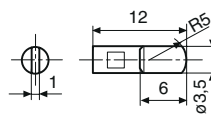
16 Eea 3



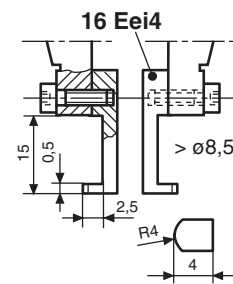
16 Eei 1



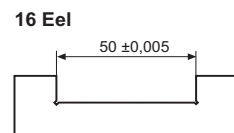
16 Eei 2



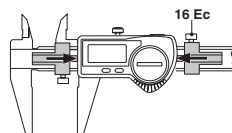
16 Eei 3



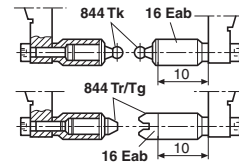
16 Eei 4



16 Eel



16 Ec



16 Eab