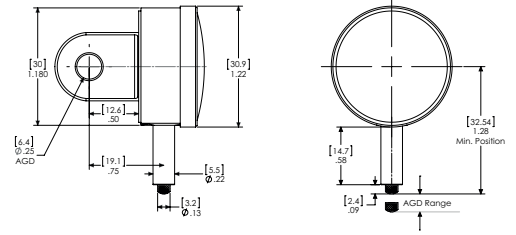


# MarCator N1/2O / N3I / N6I

## Dial Indicator

### FEATURES

- Unit construction and removable movement save repair/cleaning time and maintenance
- Hardened gears and stainless steel racks provide lasting protection against indicator failure due to shock or wear
- Jeweled bearings resist friction, add to longer indicator life
- Skeletonized, hobbed gears for more sensitive response, superior indicator accuracy with minimal hysteresis error
- Soft tinted dials (green - inch / yellow - metric) minimize eye strain
- Special steel alloy
- Balanced dial hand affords no shift, precise reading
- Controlled rack and pinion mesh eliminates slope for precise response and reading
- Smooth adjusting bezels for easy setup
- Positive pressure pullback spring requires less maintenance
- Compliance with ANSI/AGD dimensional and accuracy specifications
- Normally furnished: balanced dial with + on right; centered vertical lug back; regular contact point PT-43, .09" radiused, .093" long
- Optional dials: balanced with + on left; continuous clockwise; continuous counterclockwise
- Order by part number and specify dial style desired. For other dial styles or special requirements, call Mahr



### Application:

Where available space prohibits the use of longer dial indicators

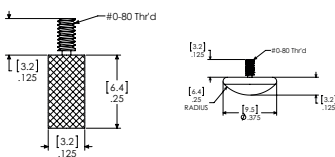
### TECHNICAL DATA

Order no.	Product type	Measuring span	Graduation value	Type of dial face	Range per rev.	Error limit	Standard	ANSI/AGD Group	Dial color
2011743	N1/2O	0.25	0.002	0-5-0	0.1	± 0.002	ANSI	0	Yellow
2011745	N3I	1.25	0.005	0-25-0	0.5	± 0.005	ANSI	0	Yellow
2011759	N6I	2.5	0.01	0-50-0	1	± 0.01	ANSI	0	Yellow

Order no.	Mounting shaft inches (text)	Scale diameter inches (text)
	inch	inch
2011743	.22"	1.22"
2011745	.22"	1.22"
2011759	.22"	1.22"

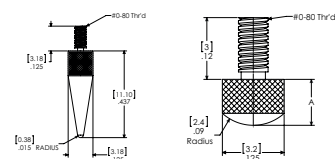
### ACCESSORIES

Order no.	Product name	Product type
2202329	Contact point, flat	AL-61
2204777	Flat back	BK-32
2204778	Lug back	BK-37
2204779	Post back 7/32"	BK-38
2204785	Adjustable back	BK-45
2204809	Screw type back 1/4-28	BK-88
2205082	Split bushing .218" x .374" x .5"	BU-112
2225757	Contact point, spherical	PT-118
2225758	Contact point, taper	PT-119
2225801	Contact point, spherical, A = 1/4"	PT-204
2225802	Contact point, spherical, A = 3/8"	PT-205
2225804	Contact point, spherical, A = 1/2"	PT-207
2225805	Contact point, spherical, A = 5/8"	PT-208
2225806	Contact point, spherical, A = 3/4"	PT-209
2225808	Contact point, spherical, A = 7/8"	PT-210
2225809	Contact point, spherical, A = 1"	PT-211
2225925	Contact point, spherical, A = 3/32" (normally furnished)	PT-43



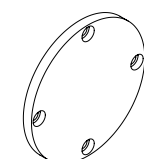
AL-61

PT-118

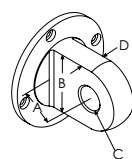


PT-119

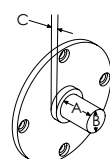
PT-43; PT-204; PT-205; PT-207; PT-208; PT-209; PT-210; PT-211



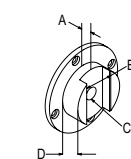
BK-32



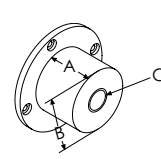
BK-37



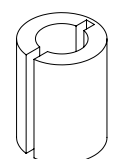
BK-38



BK-45



BK-88



BU-112